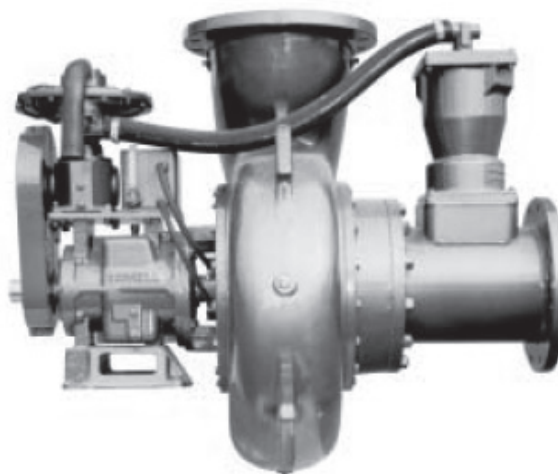


PRIME³ Vacuum Assisted Suction Pump
Model PT18TPD - D6135H
Size 18" Trash Pump

Holland® Pump Company
Corporate Office: 2610 Sidney Lanier Drive
Brunswick, Georgia 31525
Phone 912-466-0304
1-888-997-PUMP
www.hollandpump.com

PUMP SPECIFICATIONS

Type/Model: Solids Handling/Cornell 16NHG22 Redi-Prime
Volute: Cast iron ASTM A 48, class 30
Flanges: 18" suction, 16" discharge
Impeller: Cast iron ASTM A 48, class 30, enclosed 3 vane impeller
Solids: Handles 4.5" diameter compressible spherical solids.
PRIME³ Priming System: Automatic dry priming and repriming system that features a 50 cfm water tolerant, diaphragm vacuum pump belt driven by the main drive shaft. The air/water separator is a simple, reliable float.
Wear Rings: Replaceable. (Double wear rings available)
Seal: Cornell's patented Cycloseal® design with Run-Dry oil lubrication system. John Crane T-2 single mechanical seal with Viton® elastomers, stainless steel hardware and tungsten- vs. silicon carbide seal faces for abrasion resistance
Discharge Valve: Val-matic or equal
Shaft Sleeve: Heat treated 416 stainless steel
Bearings: Heavy duty, grease lubricated, deep groove ball bearings, with a minimum of 50,000 hours bearing life
Gear Reducer: Twin disc 1.8 to 1 gear reducer



PT18TPD-D6135H			Shutoff Head: 200 feet		
Flow (GPM)	Speed (RPM)	TDH (ft)	Pump Efficiency (%)	Power (hp)	Max Suction Head (ft)*
12406	990	79.8	81	305	12.7
9925**	990	101	85	299	19.8
7444	990	117	80	275	23
4962	990	132	68	246	23

*Max Suction Head is suction lift plus friction losses without risk of suction cavitation
 **Best Efficiency Point

ENGINE SPECIFICATIONS

Model: John Deere 6135H, Tier 3
Type: In Line 6 Cylinder, 4 Stroke, Turbo Charged, Liquid Cooled Diesel Engine
Displacement: 12.5 L (766 cu.in.)
Type: Electronic
Lube Oil Capacity: 12 U.S. gal (45.4L)
Coolant Capacity: 4.75 U.S. gal (18L)
Standard Features: Skid, Murphy Powerview control panel: Oil Pressure, Engine Temp, RPM, Hour Meter, Load, Engine Code Diagnostics
Optional Features: Site or DOT Highway Trailer, Auto-Start/Stop, HANS (Holland Automatic Notification System)
Coupling: Funk
Fuel Tank: 10 Gallons - separate fuel tank required

Deere Published Performance: Power: 425 BHP continuous @ 2100 RPM

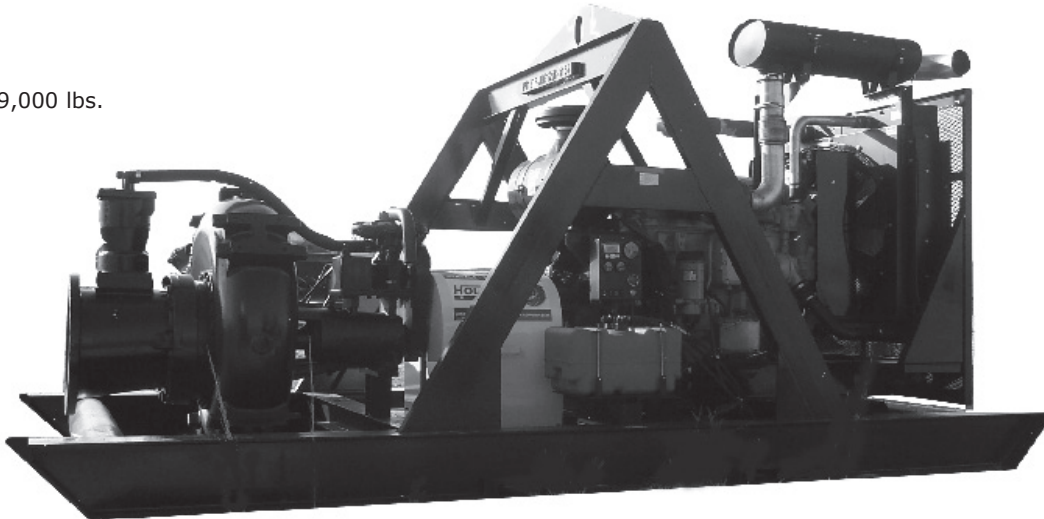


PRIME³ Vacuum Assisted Suction Pump
Model PT18TPD - D6135H
Size 18" Trash Pump

Holland® Pump Company
Corporate Office: 2610 Sidney Lanier Drive
Brunswick, Georgia 31525
Phone 912-466-0304
1-888-997-PUMP
www.hollandpump.com

Approximate Dimensions
Powered by John Deere 6135H

Length: 198"
Width: 96"
Height: 97"
Net Weight: 19,000 lbs.



Performance Curve Model: PT18TPD - D6135H
Size: 18" Trash Pump

