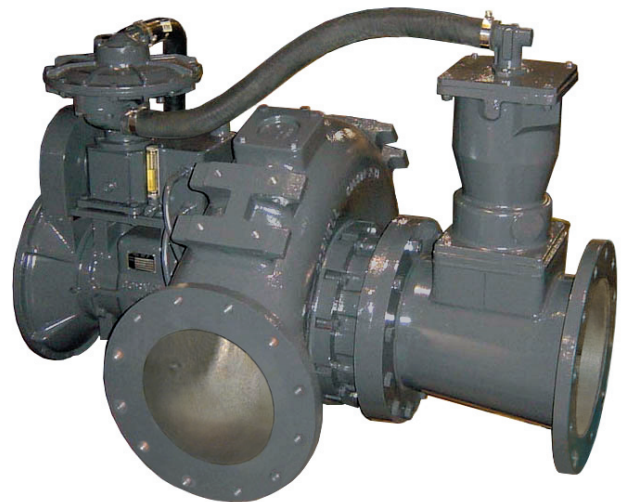


PRIME³ Vacuum Assisted Suction Pump
Model PT14TPC - D6090HF485
Size 14" High Head Trash Pump

Holland® Pump Company
Corporate Office: 2610 Sidney Lanier Drive
Brunswick, Georgia 31525
Phone 912-466-0304
1-888-997-PUMP
www.hollandpump.com

PUMP SPECIFICATIONS:

Type/Model: Solids Handling/Cornell Redi-Prime
Volute: Cast iron ASTM A 48, class 30"
Flanges: 14" suction, 12" discharge
Impeller: Cast iron ASTM A 48, class 30, enclosed
Solids: Handles 3" diameter compressible spherical solids.
PRIME³ Priming System: Automatic dry priming and repriming system that features a 50 cfm water tolerant, diaphragm vacuum pump belt driven by the main drive shaft. The air/water separator is a simple, reliable float. A check valve isolates the pump during priming and protects against back flow.
Wear Rings: Replaceable (Double wear rings available)
Seal: Cornell's patented Cycloseal® design with Run-Dry oil lubrication system. John Crane T-2 single mechanical seal with Viton® elastomers, stainless steel hardware and tungsten- vs. silicon carbide seal faces for abrasion resistance
Discharge Valve: Val-matic or equal
Shaft Sleeve: Heat treated 416 stainless steel
Bearings: Heavy duty, grease lubricated, deep groove ball bearings, with a minimum of 50,000 hours bearing life



PT14TPC-D6090HF485			Shutoff Head: 200 feet		
Flow (GPM)	Speed (RPM)	TDH (ft)	Pump Efficiency (%)	Power (hp)	Max Suction Head (ft)*
9600	1800	60.1	64	224	0
8000	1800	101	81	252	3.6
6446**	1800	131	85	252	12.1
6400	1800	132	85	252	12.3
4800	1800	154	79	237	16.1
3200	1800	169	64	212	18.3

*Max Suction Head is suction lift plus friction losses without risk of suction cavitation
 **Best Efficiency Point

ENGINE SPECIFICATIONS

Model: John Deere 6090HF485, Tier 3
Type: 6 Cylinder, 4 Stroke, Charge Air, Liquid Cooled Diesel Engine
Displacement: 9.0 L (548 cu.in.)
Type: Electronic
Air Cleaner: Dry Type with Replaceable Element
Lube Oil Capacity: 9.25 U.S. gal (35L)
Coolant Capacity: 4.25 U.S. gal (16.1L)
Cams: Dual Overhead Cam Shaft
Starter: 12 Volt
Fuel Tank: 295 Gallons
Standard Features: Skid, Murphy Powerview control panel: Oil Pressure, Engine Temp, RPM, Hour Meter, Load, Engine Code Diagnostics
Optional Features: Site or DOT Highway Trailer, Auto-Start/Stop, HANS (Holland Automatic Notification System)
Coupling: Stromag coupling

Deere Published Performance:

Maximum Continuous Horsepower: 275 BHP (105 kW)@ 2200 RPM, 275 BHP (105 kW)@ 1800 RPM



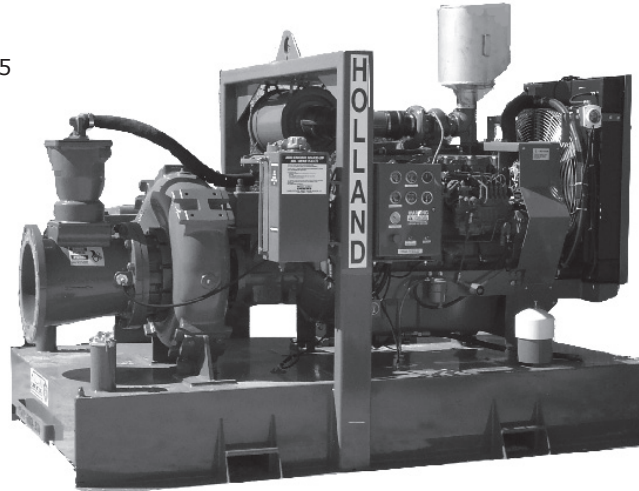
© Copyright by Holland Pump Company 2011

PRIME³ Vacuum Assisted Suction Pump
Model PT14TPC - D6090HF485
Size 14" High Head Trash Pump

Holland® Pump Company
Corporate Office: 2610 Sidney Lanier Drive
Brunswick, Georgia 31525
Phone 912-466-0304
1-888-997-PUMP
www.hollandpump.com

Approximate Dimensions
Powered by John Deere 6090HF485

Length: 110"
Width: 68.5"
Height: 80"
Net Weight: 8,900 lbs



Performance Curve
Model: PT14TPC - D6090HF485
Size: 14" High Head Trash Pump

