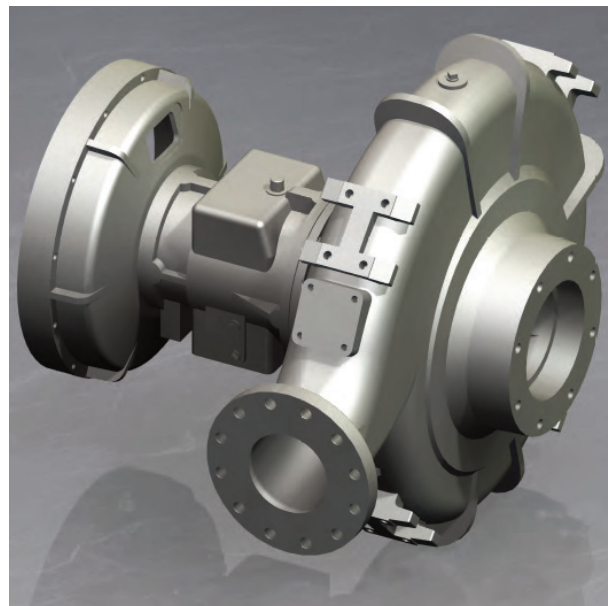


8" Jet Pump
Model J8-6068HF485
Size 8" Jet Pump

Holland® Pump Company
Corporate Office: 2610 Sidney Lanier Drive
Brunswick, Georgia 31525
Phone 912-466-0304
1-888-997-PUMP
www.hollandpump.com

PUMP SPECIFICATIONS

Type/Model: Clear Liquids® High-Pressure Cornell 5HH-EM18
Volute: Cast iron ASTM A48, Class 30 Grey Iron
Flanges: 8" Suction, 6" Discharge
Impeller: Enclosed 6 Vane, 16.38" Bronze for Clear Liquid
Solids: 1" diameter compressible spherical solids
Shaft Sleeve: Heat Treated 416 Stainless Steel
Wear Rings: Replaceable Bronze SAE 660 (Double Wear Rings available)
Sealing Arrangement: Packing
Discharge valve: Swingflex Val-Matic or equal
Bearings: Heavy duty, grease lubricated, deep groove ball bearings, with a minimum of 50,000 hours bearing life
Priming: Manual Protec Hand Primer #9
Optional Seals: Mechanical seal - Carbon ceramic or Tungsten Carbide, also available is Cycloseal run-dry seal arrangement
Optional Features: 50 CFM Maximum **PRIME³** automatic priming system, discharge valve Val-matic or equal



J8-D6068HF485				Shutoff Head: 340 feet		
Flow (GPM)	Speed (RPM)	TDH (ft)	PSI	Pump Efficiency (%)	Power (hp)	Max Suction Head (ft)*
2520	1910	266	115	84	201	12.7
2100**	1910	300	130	86	186	17.3
1680	1910	325	141	84	184	20.6
1260	1910	338	146	78	138	22.6
840	1910	342	148	64	113	23.8

*Max Suction Head is suction lift plus friction losses without risk of suction cavitation
 **Best Efficiency Point

ENGINE SPECIFICATIONS

Model: Deere 6068HF485, Tier 3
Type: 6 Cylinder, 4 Stroke, Charge Air, Liquid Cooled Diesel Engine
Displacement: 6.8 L (415 cu.in.)
Type: Electronic
Air Cleaner: Dry Type with Replaceable Element
Lube Oil Capacity: 5 U.S. gal (18.9L)
Coolant Capacity: 3.25 U.S. gal (12.3L)
Cams: Dual Overhead Cam Shaft
Starter: 12 Volt **Fuel Tank:** 295 Gallons
Standard Features: Skid, Murphy Powerview control panel: Oil Pressure, Engine Temp, RPM, Hour Meter, Load, Engine Code Diagnostics
Optional Features: Site or DOT Highway Trailer, Auto-Start/Stop, HANS (Holland Automatic Notification System)
Coupling: Stromag coupling

John Deere Published Performance:

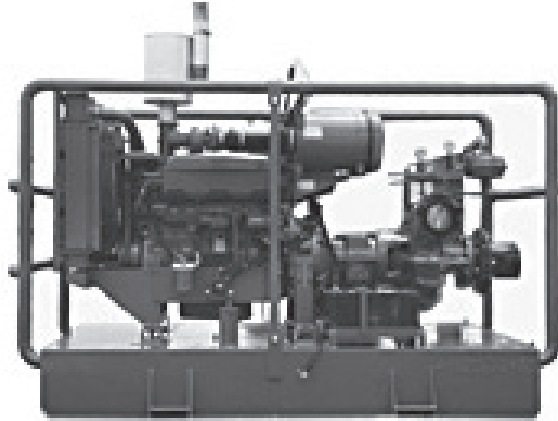
Maximum Continuous Horsepower: 225 BHP(168 kW)@ 2400 RPM, 203 BHP (151 kW)@ 1800 RPM



Holland® Pump Company
Corporate Office: 2610 Sidney Lanier Drive
Brunswick, Georgia 31525
Phone 912-466-0304
1-888-997-PUMP
www.hollandpump.com

8" Jet Pump
Model J8-6068HF485
Size 8" Jet Pump

Approximate Dimensions
Powered by Deere 6090HF485 Diesel Engine
Skid Weight: 7,000 lbs.



Performance Curve Model: J8-D6068HF485
Size: 8" Jet Pump

