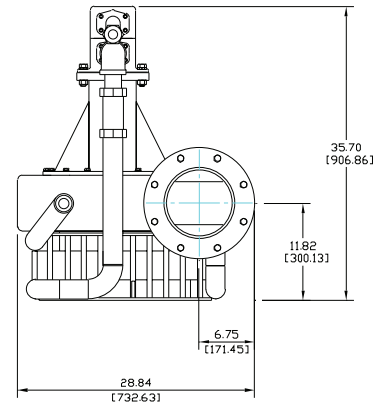
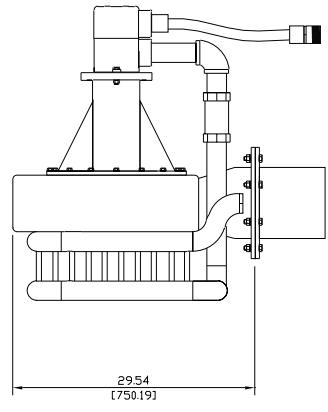


8" Hydraulically Driven Submersible System
Model H8TP-D4045TF280
Size 8" Trash Pump

Holland® Pump Company
Corporate Office: 2610 Sidney Lanier Drive
Brunswick, Georgia 31525
Phone 912-466-0304
1-888-997-PUMP
www.hollandpump.com

PUMP SPECIFICATIONS

Size: 8" Trash Pump
Volute: Fabricated Steel (optional stainless steel and special abrasion resistant steel volutes are available)
Impeller: Semi-open, 3 Vane.
Solids: Handles 4" diameter compressible spherical solids.
Impeller Shaft: High strength steel
Seal: Rotary Mechanical, oil-lubricated, carbon & ceramic or optional Tungsten Carbide or Silicon Carbide
Hydraulic System
Hydraulic Reservoir level: 50 gallon capacity with twin 10 micron spin on oil filter
Hydraulic Oil: Petroleum based AW68 Furnished standard
 (optional canola bio-degradable oil or mineral based non-toxic inherently bio-degradable oil available)
Hydraulic Pump: Denison vane type positive displacement pump with pilot operated Denison relief valve
Hydraulic Motor: Vickers vane type positive displacement motor
Heat Exchanger: Double row, SCH 40 pipe with integral intake basket (optional engine mounted oil cooler available)
Hydraulic Hose: 50' set of SAE 100R2, two wire braid high-pressure hose
Pump Head Pressure Relief System: Available as option to protect system against improper connection or interruption of hydraulic oil flow from pump head to power unit



Holland 8" Trash Pump

ENGINE SPECIFICATIONS

Model: John Deere 4045TF280, Tier 3
Type: 4 Cylinder, 4 Stroke, Turbocharged, Liquid Cooled Diesel Engine
Displacement: 4.5L (275 cu.in.)
Governor: Mechanical
Lubrication: Forced Circulation
Air Cleaner: Dry Type with Replaceable Element
Lube Oil Capacity: 3.5 U.S. gal (13.2L)
Coolant Capacity: 2.25 U.S. gal (8.5L)
Fuel Tank: Integral 114 U.S. Gallon Capacity (#2 Diesel Fuel)
Full Load Operating Time: 60 Hours Minimum @ 2000 PSI
Starter: 12 Volt, 2.0 kW
Standard Features: Cast Iron Engine Block, SAE Flywheel and Flywheel Housing, Ecoplus Oil and Fuel Filters, Glow Plug Starting Aid, Integral Inlet and Manifold, Gear Driven Coolant Pump, Cast Iron Exhaust Manifold with Center Side Outlet, Standard Instrument Panel: Engine Temperature and Low Oil Pressure with optional Gauge, Key Start, and Hour Meter
Optional Features: Site or DOT Highway Trailer, Automatic Remote Start and Stop, HANS (Holland Automatic Notification System), NEMA 4 Instrument Package Covering: Air Filter, Fuel Filter, Engine Temperature, Fuel Level, Engine Oil Pressure, Hour Meter, Amp Meter, Hydraulic Oil Pressure
John Deere Published Performance:
 Maximum Continuous Power: 72 BHP (54kW) @ 2400 RPM
 Maximum Intermittent Power: 80 BHP (60kW) @ 2400 RPM

H8TP @ 2000 PSI	Capacity of Pump in U.S. Gallons per Minute (gpm) (Continuous Performance)
20' Head	2450
10' Head	2700

Specifications subject to change without notice



© Copyright by Holland Pump Company 2011

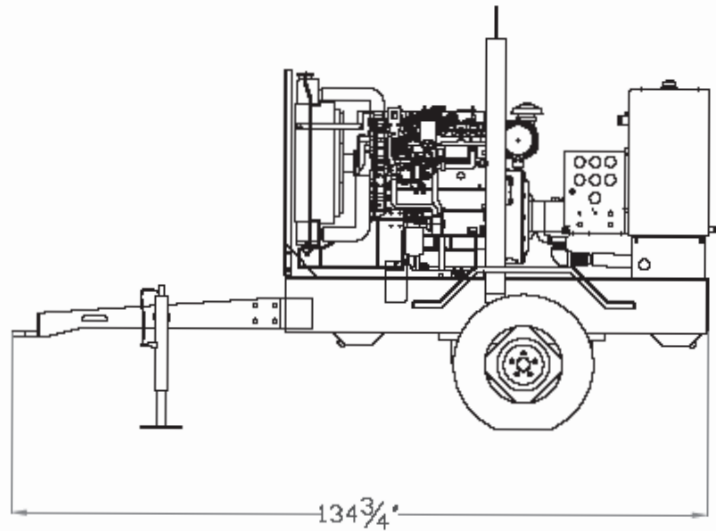
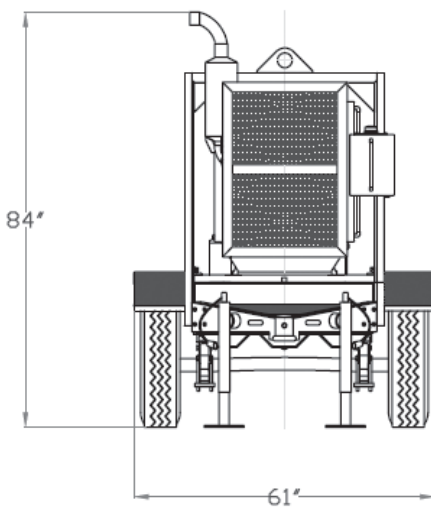
8" Hydraulically Driven Submersible System
Model H8TP-D4045TF280
Size 8" Trash Pump

Holland® Pump Company
Corporate Office: 2610 Sidney Lanier Drive
Brunswick, Georgia 31525
Phone 912-466-0304
1-888-997-PUMP
www.hollandpump.com

Approximate Dimensions

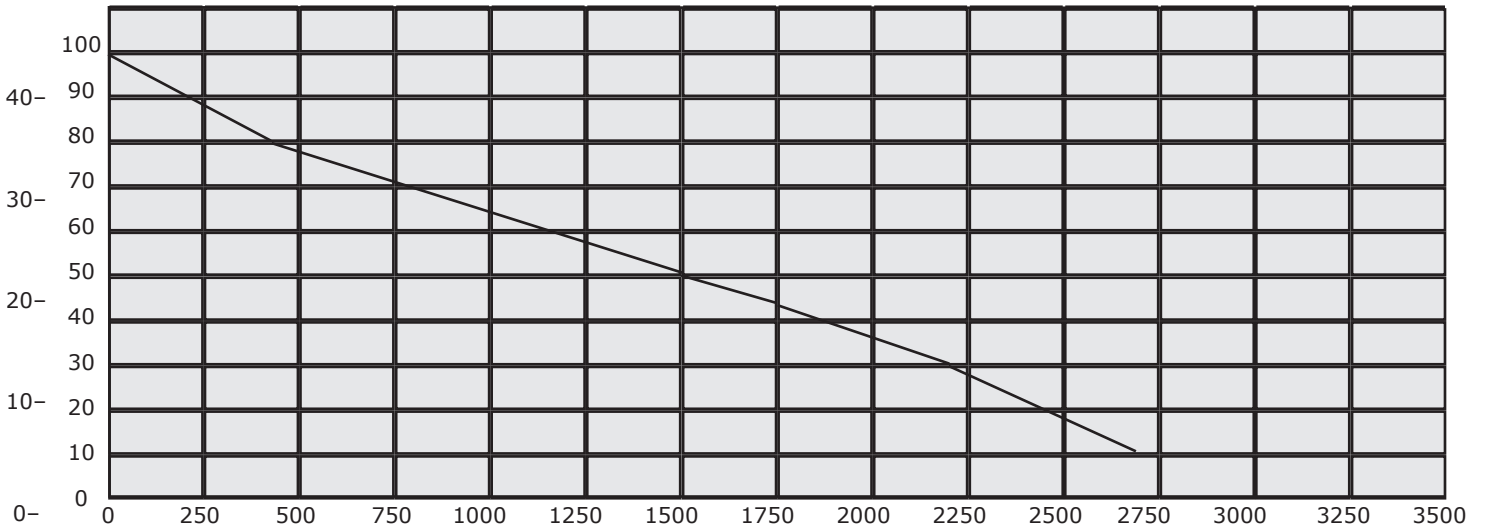
Powered by John Deere 4045D Diesel Engine,
Optional Single Axle Trailer Shown

	Skid Base	DOT Trailer	Pump
Net Weight (lbs)	2568	2968	528
Shipping Weight (lbs)	N/A	N/A	N/A
Export Crate Size (cu. ft)	198	N/A	19



TOTAL HEAD
PSI FT

Performance Curve Model: H8TP-D4045TF280
Size: 8" Trash Pump



U.S. Gallons Per Minute (GPM) @ 2000 PSI